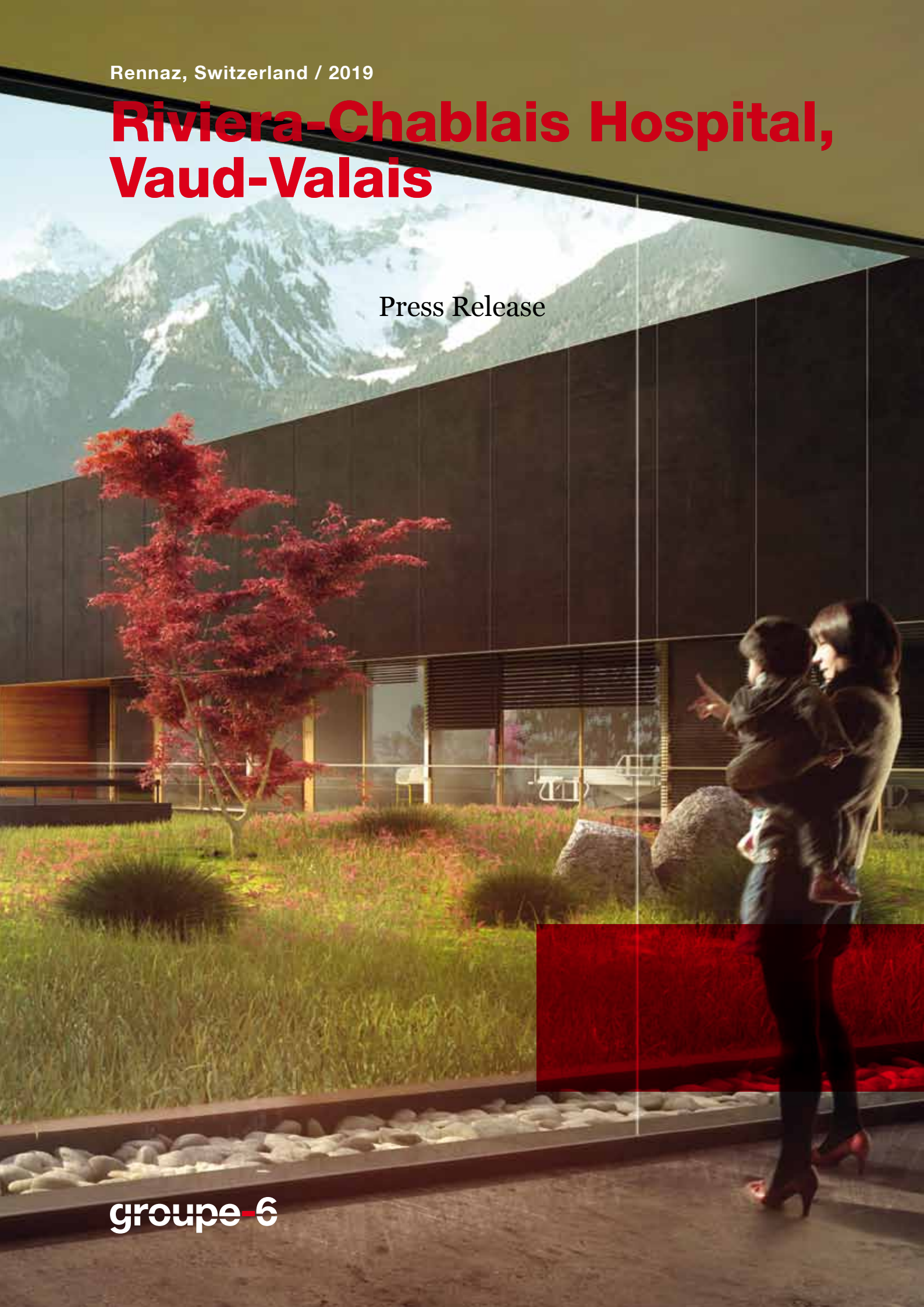


Rennaz, Switzerland / 2019

Riviera-Chablais Hospital, Vaud-Valais

Press Release



groupe 6

PRESS CONTACT

Communication Groupe-6

Caroline Paul, Head of Communication
T + 33 (0)1 53 17 96 00
94 avenue Ledru-Rollin
75011 Paris
caroline.paul@groupe-6.com

In April 2011, Groupe-6 and GD architects were named as winners of the competition to design the future Riviera-Chablais hospital in Rennaz. The project passed another milestone in October 2013 when planning permission was granted, leading to the start of construction work in 2014. .

A hospital uniting two cantons

The future Riviera-Chablais Hospital is located in the commune of Rennaz, strategically located on the border between the cantons of Vaud and Valais. This inter-cantonal acute care facility features 350 hospital beds, a large technical plateau and out-patient services. Developed for technical and economic reasons, and to ensure sustainable, high-quality care in the Vaud Riviera and Chablais, the Riviera-Chablais hospital will replace the two hospitals of Riviera and Chablais and five existing acute care centres. By grouping acute care on a single site, the new hospital will better respond to the need for specialization, as well as the increase in chronic diseases and polyopathologies related to the ageing population. It will form the core of a new hospital complex, serving a population of 180,000 when the hospital opens. It will accommodate some 2,000 people.

Care and a broad landscape

Built on three levels, the building fits horizontally into the landscape. Nestling in the valley, it is scaled in proportion to both the surrounding region and the neighbouring village. Respectful of the area, it stands directly onto the ground, with no basement level. At its summit, the top floors interact with the silhouette of the roofs of Rennaz. This compact building unfolds its horizontal lines and radically daring façades, without competing with the village.

Composed of superimposed strata, the building is made up of three main components :

- The top floor, which houses the accommodation area, is composed of a dark mineral façade which evokes the rock of the mountains. Shielded from the disturbances of the busy roads, the patient rooms open out onto internal courtyards. Only the panorama of the mountains is visible. The atmosphere is protective, it inspires tranquillity and rest. It is a healing environment.
- The first two levels accommodate emergency medical functions, imaging, intensive care, operating rooms, the out-patients block, etc. The frontage, enveloped in glass, unifies these two levels in an interaction of reflection and transparency, translating the intensity and the to-and-fro of medical activity. On the west side, a single vast opening forms the entrance to the hospital.
- Two metal-fronted independent volumes join the volumetry of the first two levels in the same kind of way, reflective and enveloping. The first, in the foreground of the main façade, corresponds to the entrance to A&E and provides a direct link with the road. The second, located to the east, combines the various logistical connections. These volumes, which link the hospital to the outside world, anchor the building to the ground.

These projected volumes on the first two levels facilitate the building's overall legibility and help guide visitors : two main entrances, A&E and out-patients / visitors, are clearly identifiable on the main facade. Inside, orientation is simple : the majority of the reception terminals are visible from the entrance, and the flow of visitors and consultants is naturally lit, opening onto the landscape for better orientation.

An efficient distribution of access flows and the quality of the surroundings supports this readability. Flows are distributed in three zones : in the north, in-patients, A&E, personnel, and goods ; in the west, visitors and out-patients ; in the east, logistics. Through its landscaping, the building fits into a densely wooded area, providing an orientation for the site and creating a transition with the roads. Highlighting the entrance to the site, the western frontage and its reception areas are fully clear, opening onto an esplanade which travels between a relaxing terrace and a planted “flowered meadow” space, which features a water retention pond.

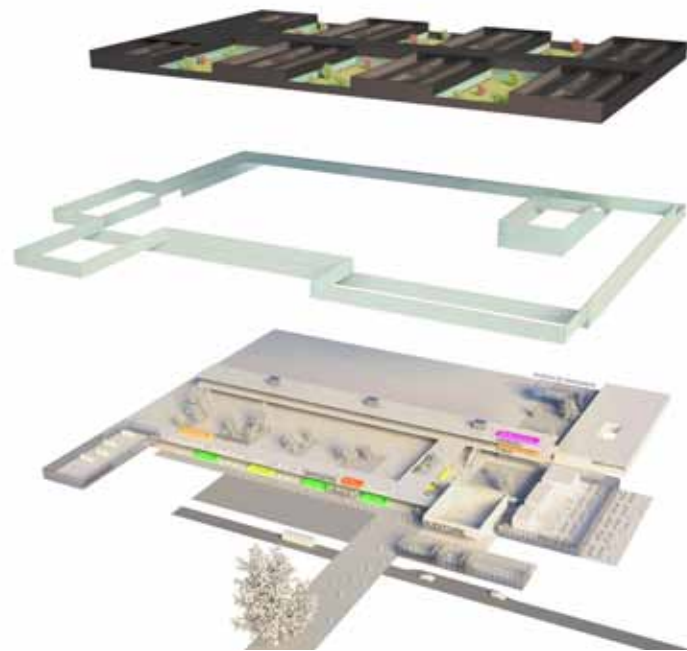
Expandability and flexibility of the hospital structure

In addition to the superposition of horizontal layers, the Riviera-Chablais hospital also combines three frames to allow for internal modifications and extensions :

- A medical frame : it structures the medical terminals along a North-South backbone;
- A technical frame : located not in the basement but on the roof, based on a network made up of the backbone and perpendicular galleries, to allow for easy maintenance and easy development of the hospital on itself;
- A safety frame : with a balanced distribution of fire escapes throughout the unit, to allow for future scalability.

Through its composition and structure, Riviera-Chablais hospital can develop on itself : expandable and accessible technical framework roofing, structural framework post/flexible beam 7.50 x 7. 50, substantial ceiling heights, generous traffic areas. The widths of traffic are intentionally very comfortable (3.75 m on logistical driveways, 3 m for driveway to the surgical unit, 2.40 m minimum in traffic where beds cross), to anticipate future developments, including transport logistics and healthcare beds. Its location on the site provides possibilities for extension : a reserve allowing the construction of 30% more surface is defined to the north of the plot.

The building aims to achieve MINERGIE® certification.



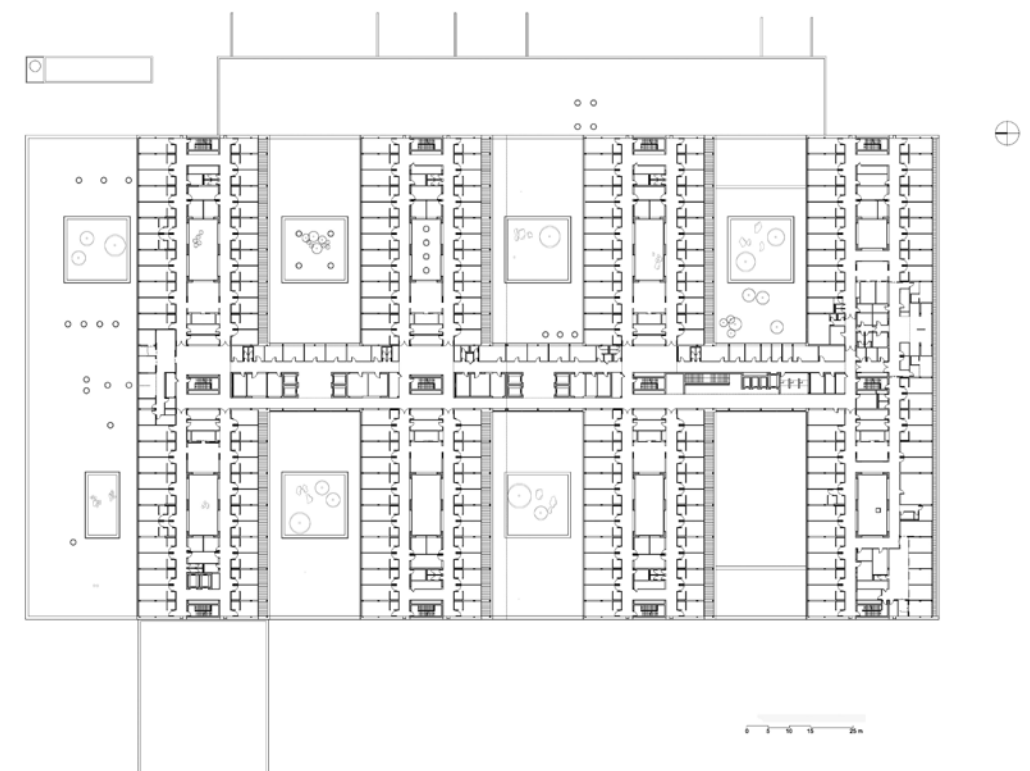
Superimposition : a transparent covering shows the medical activity, while the last level, with its dark mineral frontages, protects the intimacy of the rooms opening onto planted courtyards..



Site plan



Longitudinal section



Second floor : Accommodation



Aerial view



Playing with strong contrasts, with a broad opening onto the landscape, the Riviera-Chablais Hospital is both simple and streamlined, defining interior spaces as bright and generous.



Informations

Operation : Acute care facility

Location : Rennaz (VD), Switzerland

Project Owner : Riviera-Chablais Hospital Governing Board, Vaud-Valais

Architects : Groupe-6 architects (Denis Bouvier) / GD architecte (Laurent Geninasca)

Technical engineering : Quartal (quantity surveyor) / Biol Conseils SA (landscape, environmental advice) / Daniel Willi SA (Civil Engineering) / TP SA (plumbing, sanitation, medical fluids) / Betelec SA (electricity, automatic control systems) / Weinmann Energies (CVC)

Net surface area : 67 000 sq m net floor area

Number of beds : 350

Construction costs : € 180 M excl.VAT / CHF 206 M (2011 value)

Schedule : Architectural design competition: 2011 (winner); estimated delivery : 2019

Groupe-6, a team of architects covering a range of disciplines

France's 3rd leading architectural agency, with some 180 employees from 15 different nationalities, Groupe-6 is a multi-disciplinary structure made up of architects, urban planners, interior designers, landscape designers and economists.

For 30 years now, Groupe-6 has been designing complex, large-scale projects that fall in line with their flawless aesthetic approach and optimal functionality, keeping within the budget and deadlines given.

Groupe-6 is a flexible, multi-disciplinary architectural agency, which can adapt to the wide range of requests it receives from its clients and contractors. It has expertise in sectors of activity ranging from business-related urban planning, hospital design, new technologies, research and education, sport and leisure, culture, and finally, urban planning.

In the interests of its client and the end project, Groupe-6 ensures it works with the world's best specialists and opens its teams up to expertise from outside the agency, in the areas of engineering, landscaping, stage design, lighting, acoustics, and more. The agency's teams are run by experienced project leaders able to tackle complex and demanding programs.

Groupe-6 is committed to designing projects that respond to the issues of sustainable development and eco-responsibility. The agency pays particular attention to the quality and sustainability of its architecture and, with respect to its constructions, takes a preventive approach to the ecological and energy-related issues.

For over 10 years, Groupe-6 has been working overseas, accompanying its clients in their real estates ventures and exporting its savoir-faire. Already involved in projects in Europe, the Ukraine, the Middle-East and the Magreb, Groupe-6 competes in the most dynamic geographical areas.

Certified ISO 9001 in 2009, Groupe-6 aims for excellence in what it does, focusing in particular on four key values :

- Consider its clients as real partners, offering permanent, trusting and constructive dialogue about their projects. Respect, attentiveness and dedication are all highly valued by the agency.
- Invest in bold projects that push the agency to be creative, thorough and practical. Groupe-6 values its clients projects, giving them a privileged place among its concerns.
- Ensure a collective mode of operating, striking the right balance between innovation, consultation, methodology, and decision-making priorities.
- Provide clients with architectural solutions that offer the best compromise between functional requirements, flexibility and sustainability: essential conditions for the quality and durability of its projects.

Paris

94 avenue Ledru-Rollin
75011 Paris
France
T +33 (0)1 53 17 96 00
paris@groupe-6.com

Grenoble

12 rue des Arts et Métiers
CS 70069 - 38026 Grenoble Cedex 1
France
T +33 (0)4 76 96 45 90
grenoble@groupe-6.com



www.groupe-6.com