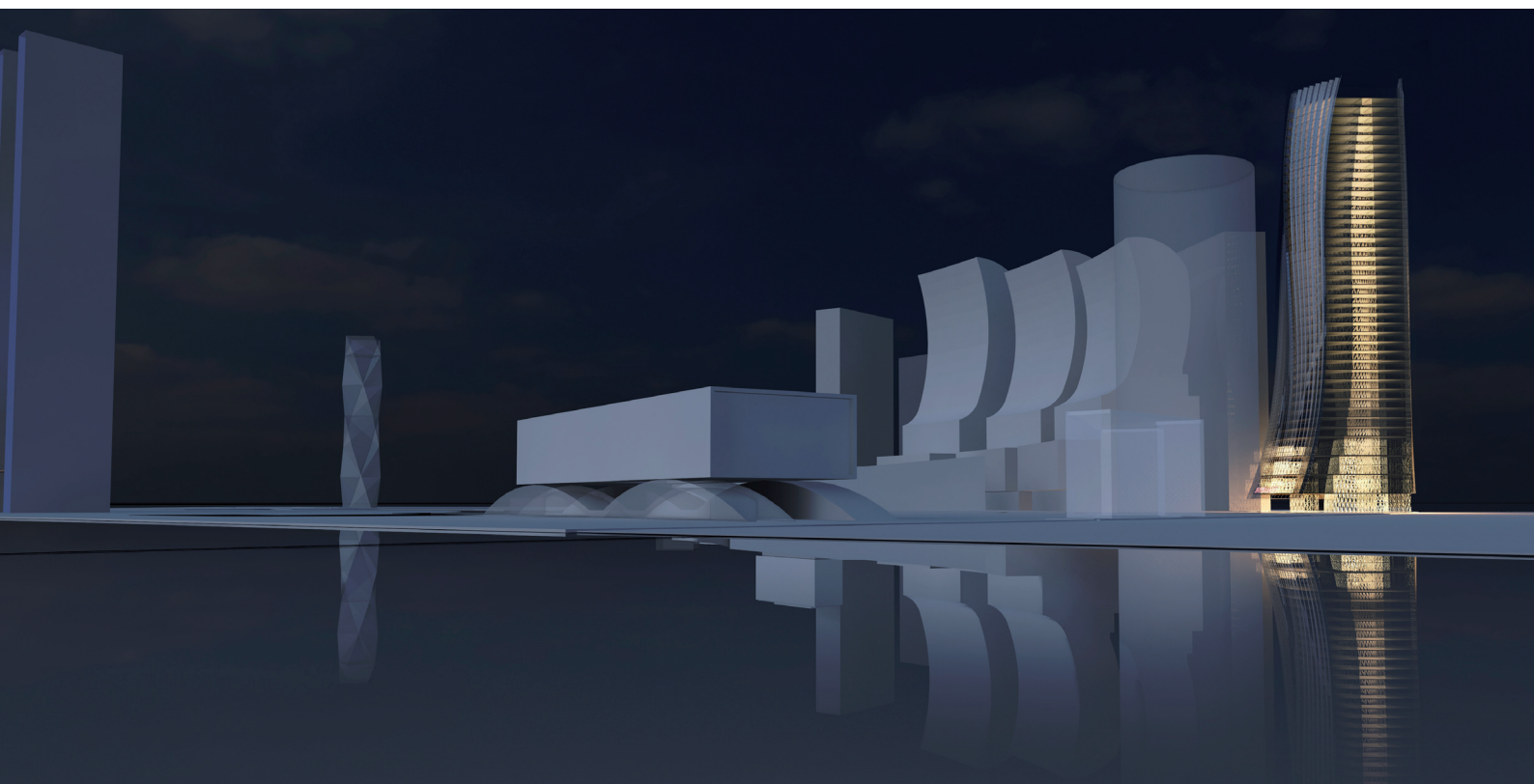


Bahrain / 2015

JW Marriott Hotel Bahrain



groupe-6



Bahrain / 2015

A VERTICAL OASIS

The JW Marriott Hotel is a landmark, facing the breathtaking panorama of Bahrain Bay. Emerging from the park, the skyscraper is covered by a folded facade protecting the « porte cochère ». The interior of the building is conceived as a vertical oasis. Floating on a water mirror, the hall faces the park. Its transparent facade welcomes the clients in a fresh and shaded atmosphere. A majestic stair leads to the main Ballroom, the meeting room, and the business centre. At upper levels, panoramic rooms and apartments overlook the sea and hanging gardens create a delicate and relaxing ambience in the restaurants. The rooftop of the building reveals a shaded pool terrace dominating Bahrain's Bay. Asserting a new landmark in Bahrain Bay's skyline, the architecture of the hotel tower is based on 2 main concepts:

- The vertical oasis: welcoming and fresh, the hotel shows no exterior podium. Its transparent groundfloor floating above the water mirror creates a continuity with the perspective of the park. Hanging gardens and a rooftop terrace create a vertical landscape arising from the ground.
- The folded facade: the building is protected by a folded facade, providing panoramic views from the interior spaces.



Client: Private Client | **Project:** JW Marriott Hotel Bahrain | **Selection method:** competition (2015) | **Team:** Groupe-6 (Architect, Lead Consultant) - SETEC (Engineering) - RFR (Envelopes) - AES (Local Consultant) | **Area:** 60,000 sqm GIA | **Number of keys:** 340

